

PLANTING SCHEDULES

Tree planting - typical species list

Species	Height (m)	Form	Girth	Root condition	Mature height (m)	Specification
Acer campestre 'Elsrijk'	4.5-6.0	SM	20-25	Airpot	10-12m	Clear stem to 2m min.
Alnus glutinosa	4.0-4.5	EHS	16-18	Airpot	10-20m	Clear stem to 2m min.
Amelanchier lamarckii	2.5-3.0	Multi-stem	-	Airpot	4-6m	Multistem umbrella form tree, 3-4 stems min., size - 8-10 cm girth each. No wounds on stem. Cultivated in the same climatic zone. Ecolabel
Betula nigra	4.0-4.5	EHS	16-18	Airpot	10-20m	Clear stem to 2m min.
Larix decidua	4.0-4.5	EHS	16-18	Airpot	10-20m	Clear stem to 2m min.
Pinus sylvestris	4.5-6.0	SM	20-25	Airpot	10-20m	Clear stem to 2m min.
Prunus padus	4.0-4.5	EHS	16-18	Airpot	8-12m	Clear stem to 2m min.
Prunus x schmittii	4.5-6.0	SM	20-25	Airpot	8-10m	Clear stem to 2m min.
Salix caprea	2.5-3.0	Multi-stem	-	Airpot	6-10m	Multistem umbrella form tree, 3-4 stems min., size - 8-10 cm girth each. No wounds on stem. Cultivated in the same climatic zone. Ecolabel
Sorbus aria 'Lutescens'	4.0-4.5	EHS	16-18	Airpot	8-12m	Clear stem to 2m min.

Parkland planting - typical species list

%	Species	Height (cm)	Pot size (L)	Density (/m ²)	Special interest
	Allium hollandicum 'Purple sensation'	Bulb	n/a	10	June
20%	Anemanthele lessoniana	40-60	3L	5	/
15%	Armeria maritima	10-20	1L	8	Late spring / summer
20%	Sesleria autumnalis	40-60	3L	5	/
30%	Verbena bonariensis	40-60	3L	5	Mid summer
15%	Eranthis hyemalis	10-20	bulb	15	March

Garden planting - typical species list

%	Species	Height (cm)	Pot size (L)	Density (/m ²)	Special interest
5%	Aquilegia vulgaris	50-100	3L	6	Spring
10%	Ajuga reptans 'Catlin's Giant'	15-30	1L	6	Early spring
10%	Cirsium rivulare atropurpureum	100-150	3L	6	Late spring
5%	Nepeta grandiflora 'Bramdean'	50-100	3L	6	Early summer
5%	Hebe albicans	20-40	2L	6	Summer
5%	Hebe 'Great Orme'	20-40	2L	6	Late summer
15%	Perovskia atriplicifolia	40-60	3L	5	Summer
15%	Sesleria autumnalis	50-100	3L	5	Late summer / Autumn
5%	Sedum spectabile	40-60	3L	6	Late summer / Autumn
10%	Rudbeckia hirta	40-80	3L	6	Late summer / Autumn
15%	Phlomis tuberosa 'Amazone'	60-120	3L	5	Summer

Podium transition planting - typical species list

%	Species	Height (cm)	Pot size (L)	Density (/m ²)	Special interest
10%	Achillea 'Petra'	20-40	2L	6	Late spring
5%	Aquilegia vulgaris	50-100	3L	6	Spring
5%	Ajuga reptans 'Catlin's Giant'	15-30	1L	6	Early spring
15%	Anemanthele lessoniana	40-60	3L	5	Summer
10%	Cirsium rivulare atropurpureum	100-150	3L	6	Late spring
10%	Hebe 'Great Orme'	20-40	2L	6	Late summer
15%	Perovskia atriplicifolia	40-60	3L	5	Summer
15%	Sesleria autumnalis	50-100	3L	5	Late summer / Autumn
5%	Sedum spectabile	40-60	3L	6	Late summer / Autumn
10%	Rudbeckia hirta	40-80	3L	6	Late summer / Autumn

Podium planting - typical species list

%	Species	Height (cm)	Pot size (L)	Density (/m ²)	Special interest
10%	Achillea 'Petra'	20-40	2L	6	Late spring
15%	Achillea ptarmica 'The Pearl'	20-40	2L	6	Summer
20%	Anemanthele lessoniana	40-60	3L	5	Summer
15%	Aquilegia vulgaris	50-100	3L	5	Spring
20%	Sedum spectabile	40-60	3L	6	Late summer / Autumn
20%	Muscari armeniacum	Bulb	n/a	10	April / May

Raingarden planting - typical species list

%	Species	Height (cm)	Pot size (L)	Density (/m ²)	Special interest
	Allium sphaerocephalon	Bulb	n/a	8	Summer
	Iris siberica	Bulb	n/a	8	May / June
25%	Artemisia arborescens 'Powis castle'	50-100	3L	5	August
25%	Phlomis tuberosa 'Amazone'	60-120	3L	4	Summer
20%	Achillea filipendulina 'Coronation Gold'	50-100	3L	5	Late spring, early summer
20%	aster amellus	50-100	3L	5	Autumn
20%	rudbeckia fulgida deamii	50-100	3L	5	Late summer

Hedge planting

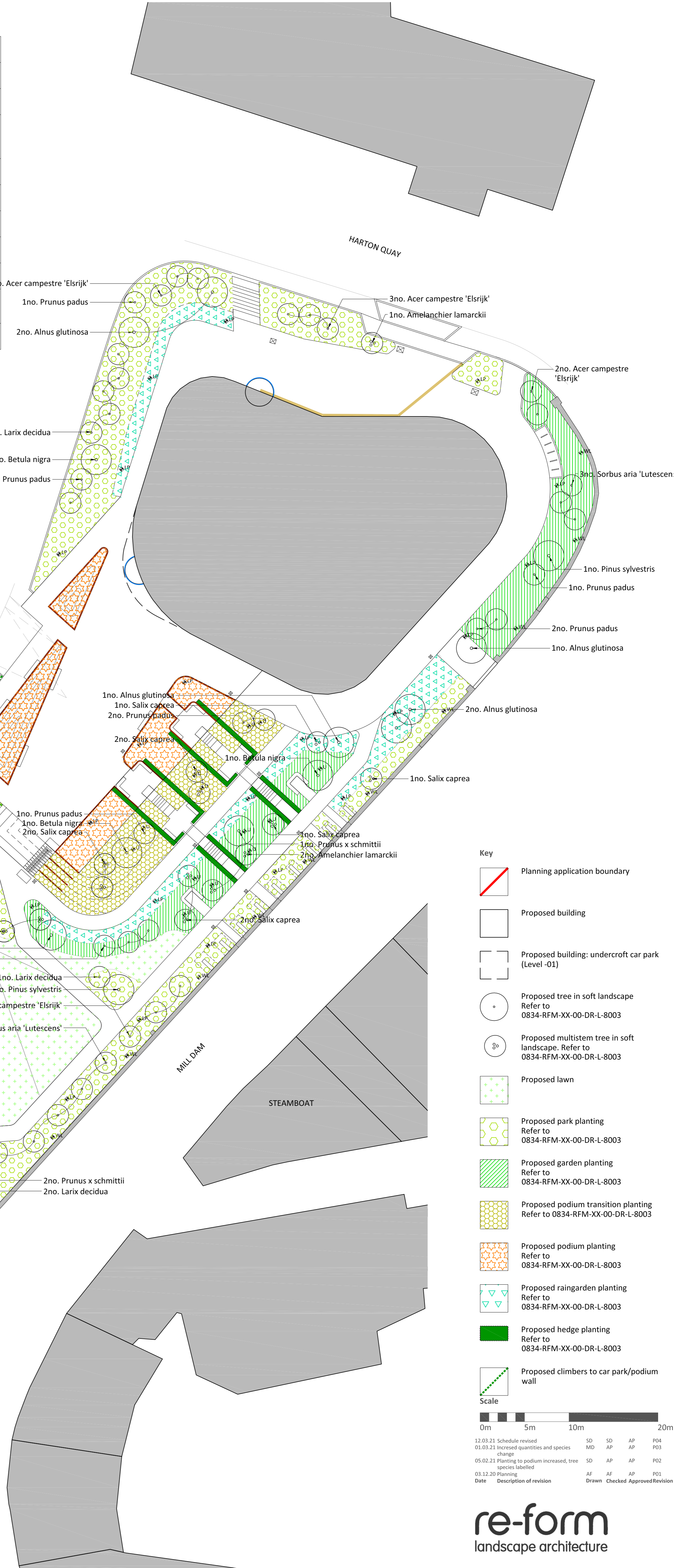
Species	Height (cm)	Pot size (L)	Density
Lonicera nitida 'Maigrun'	80	3L	4/linear metre

Climber planting

Species	Height (cm)	Pot size (L)	Density
Hedera helix	10-20	1L	5/linear metre

Lawn turf

Product	Supplier
LT7 Festival turf	Lindum Turf or similar
Eranthis hyemalis (bulb)	



re-form
landscape architecture

Tower Works, Globe Road,
Leeds LS11 5QG
T: +44 (0)113 245 4695
E: info@re-formlandscape.com
W: re-formlandscape.com

Project
GLASSWORKS, HARTON QUAYS, SOUTH SHIELDS
RF20-834

Client
MUSE

Document title
PLANTING PLAN

Paper size
A1

Scale
1:250

Status
FOR STAGE APPROVAL

Drawing number
0834-RFM-XX-ZZ-DR-L-0001

Revision
P04

© re-form landscape architecture